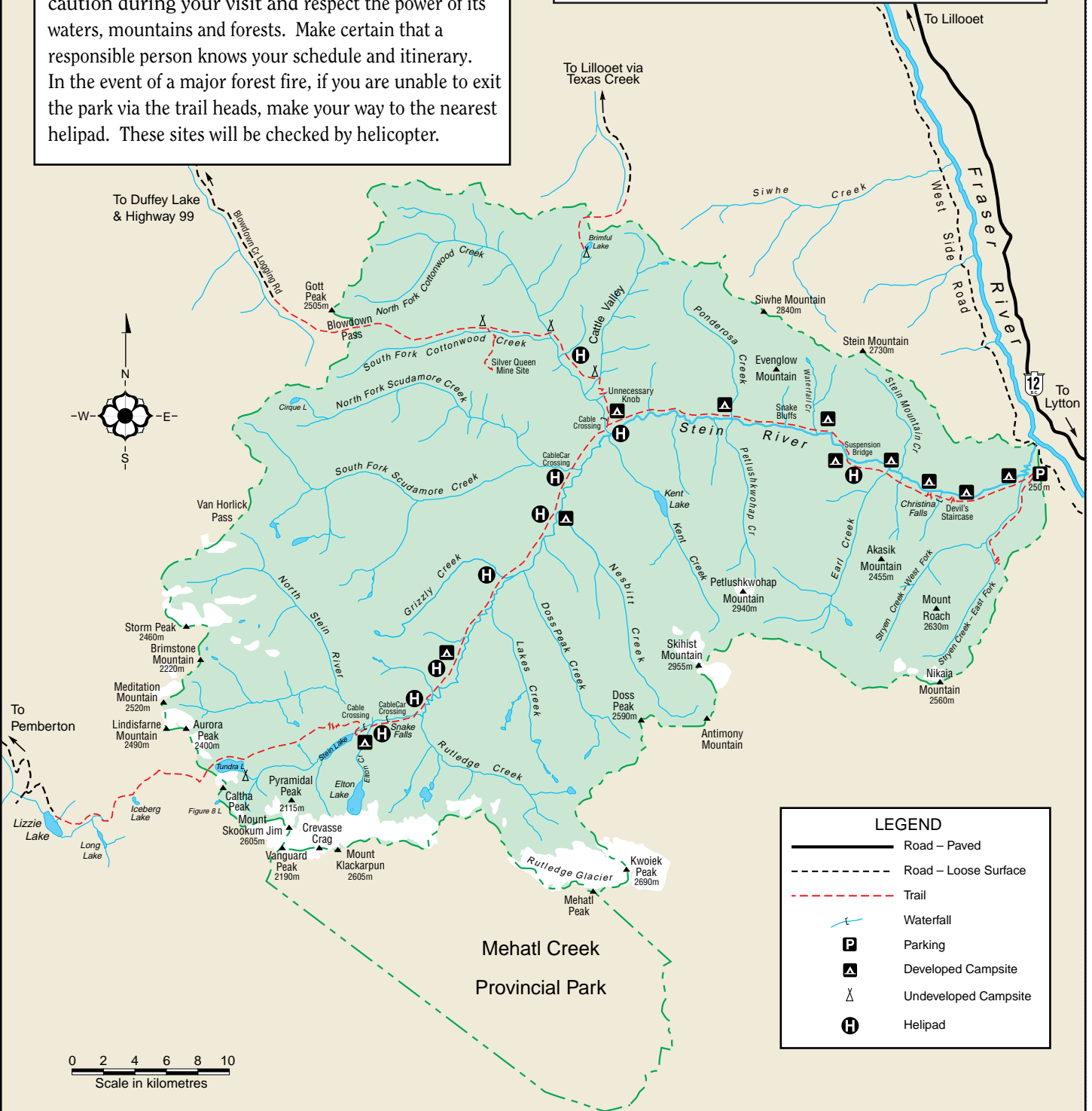


A REMINDER:

The Stein Valley is a wilderness park. Exercise caution during your visit and respect the power of its waters, mountains and forests. Make certain that a responsible person knows your schedule and itinerary. In the event of a major forest fire, if you are unable to exit the park via the trail heads, make your way to the nearest helipad. These sites will be checked by helicopter.



Stein Valley Nlaka'pamux Heritage Park



0 2 4 6 8 10
Scale in kilometres

Welcome to Stein Valley Nlaka'pamux Heritage Park. Created in 1995, this 107,191 hectare Provincial Park protects the entire Stein watershed, one of the last untouched watersheds in southwestern British Columbia.

The park also protects significant cultural and spiritual sites including one of the largest Aboriginal rock art sites in Canada. In a spirit of cooperation, the Stein Valley is managed jointly by BC Parks and Lytton First Nations.